

**SALE DATE: Thursday, August 27<sup>th</sup>, 10:00 A.M.**  
**Doors Open @ 8:00 A.M.**



# PUBLIC MACHINERY AUCTION



**INSPECTION: Wednesday, August 26<sup>th</sup>**  
**8:00 A.M. - 5:00 P.M. & Morning of Sale**

**THESE ITEMS AND MORE! DON'T MISS THIS SALE!**

**3D Machining**  
**7020 Telegraph Rd.**  
**Erie, MI 48133**

Sale conducted by:

**Scott Yoder,**  
*Auctioneer*



**G-2000 Inc.**  
*Machinery Auctioneers*

1050 N. Westwood  
Toledo, Ohio 43607

Website: [www.g2000inc.com](http://www.g2000inc.com)

E-Mail:

[auctions@g2000inc.com](mailto:auctions@g2000inc.com)

**(419) 536-4445**

**Fax (419) 536-4846**



Fadal CNC Vertical Machining Center

## CNC VERTICAL MACHINING CENTERS

**Fadal CNC Vertical Machining Center, Model VMC 6030, Fadal CNC 88HS Control, Model 907-1, SN: 9308661, 62" X 30" Table, 60" X-Axis Travel, 30" Y-Axis Travel, 30" Z-Axis Travel**

**Mitsui Seiki CNC Vertical Machining Center, Model VS5A, Fanuc 11M Control, 30-Position Tool Changer**



Mitsui Seiki CNC Vertical Machining Center

**G-2000'S  
RIGGING &  
TRUCKING STAFF  
ARE READY TO  
MOVE IT ALL!  
CALL PRIOR TO  
AUCTION FOR  
PRICING AND  
INFORMATION.**

**Can't attend this auction?**  
**Now you can**  
**bid from ANYWHERE!**  
**Visit [www.bidspotter.com](http://www.bidspotter.com) for**  
**information or call our office**  
**to pre-register.**



Live Interactive Auction Webcasts!



10 HP Worthington Air Compressor

**DON'T MISS THIS SALE!**

**AIR COMPRESSOR**

10 HP Worthington Air Compressor, SN: EU7138

**BOOM LIFTS**

Genie Electric Boom Lift, Model Z-30 / 20, SN: 1157, Cushion Tires, (1997)

Grove Gas Boom Lift, Model MZI 40, SN: 15224, Pnuematic Tires, 2128 Hours

**CNC DRILLING CENTER**

Kitamura Mycenter 1 CNC Drilling Center, SN: 01774 (1986), Fanuc CNC Control

**CNC GRINDER - CYLINDRICAL**

Studer Universal CNC Cylindrical Od/Id Grinder, Model S-35, SN: 20036, 6 7/8" Center Height, 40" Center Distance, 21 1/4" Max Grinding Length, 11 13/16" Grinding Diameter, 25 19/32" Z-Axis Travel, 10" X-Axis Travel, 1,670 RPM Grinding Wheel Speed, 15 - 750 RPM Workhead Speed Range, Morse 5 Taper, 74 Ft-Lb Grinding Load, (1990) **Location: Pontiac, MI**

**CNC HORIZONTAL MACHINING CENTER**

Okuma Horizontal CNC Machining Center, Model MC400H, SN: 0163 (1995), (2) 15.7" Pallets, 22.05" X-Axis Travel, 18.11" Y-Axis Travel, 20.08" Z-Axis Travel, 45 - 7,000 RPM Spindle Speeds, Iso #40 Spindle Taper, 880 Lb Max Load Per Pallet, 72-Tool ATC, **Location: Pontiac, MI**  
Leblond Makino Horizontal CNC Machining Center, Model A 55, 15.75" X 15.75" Dual Pallets, Travels: X-Axis 22" Y-Axis 22", Z-Axis 22", Fanuc Om Controls, Age 1991, **Location: Pontiac, MI**

**CNC VERTICAL MACHINING CENTER**

Mori Seiki CNC Vertical Machining Center, Model MV JR, SN: 169, SN: 149, Fanuc Control, 17" X 36" Table, 22" X-Axis Travel, 16" Y-Axis Travel, 18" Z-Axis Travel, Cat 40 Taper (2) Available  
Mitsui Seiki CNC Vertical Machining Center, Model VSSA, Fanuc 11M Control, 30-Position Tool Changer

Fadal CNC Vertical Machining Center, Model VMC 6030, Fadal CNC 88HS Control, Model 907-1, SN: 9308661, 62" X 30" Table, 60" X-Axis Travel, 30" Y-Axis Travel, 30" Z-Axis Travel

Okuma 4-Axis Vertical CNC Machining Center, Model MC-4VA, SN: 9159 & SN: 9299, 39.3" X 20.8" Pallet, 25" X-Cross Travel, 17" Y-Vertical Travel, 18" Z-Longitudinal Travel, 2,000 Max Spindle Speed, 10 HP Spindle Drive Motor, Cat 40 Spindle Taper, 20-Tool ATC, OSP 5000 M-G Control, (2) Available, **Location Pontiac, MI**

**EDM**

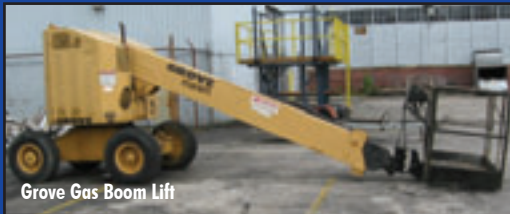
Charmilles Robofil 290F CNC Wire EDM, SN: 330002, 15.75" X-Axis Travel, 9.8" Y-Axis Travel, 8" Z-Axis Travel, (1995)



Leblond Makino Horizontal CNC Machining Center



Genie Electric Boom Lift



Grove Gas Boom Lift



Kitamura Mycenter 1 CNC Drilling Center



Mori Seiki CNC Vertical Machining Center



Studer Universal CNC Cylindrical Od/Id Grinder



Okuma 4-Axis Vertical CNC Machining Center



Mori Seiki CNC Vertical Machining Center



Okuma Horizontal CNC Machining Center



Okuma 4-Axis Vertical CNC Machining Center



Charmilles Robofil 290F CNC Wire EDM

**VIEW & BID ONLINE!  
WWW.BIDSPOTTER.COM**



16" X 108" Lodge & Shipley Engine Lathe



Grand Rapids Horizontal Hydraulic Surface Grinder



17" X 72" Clausing Colchester Engine Lathe

**ENGINE LATHE**  
 17" X 72" Clausing Colchester Engine Lathe, SN: 7/0218/13236, Inch/Metric Threading, 20 - 1,800 RPM, Taper  
 16" X 108" Lodge & Shipley Engine Lathe, Model A, SN: 40384, Taper Attachment, 15" 4-Jaw Chuck  
 20" x 54" American Engine Lathe, SN: 78414-67, Spindle Speeds 15 - 1000 RPM, 18" 4-Jaw Chuck, 2" Spindle Hole, Location: Toledo, Ohio

**FORK TRUCK**  
 10,000 Lb Hyster Forklift, SN: C004D09546H, Cushion Tires, 2-Stage Mast, 42" Forks, LP Fuel

**GRINDER - CYLINDRICAL**  
 12" X 30" Brown & Sharpe Cylindrical Grinder, Model 2, 10" 4-Jaw Chuck On Workhead, 65 - 360 RPM, Workhead Spindle Speeds

**GRINDER - HAND SURFACE**  
 6" X 18" Reid Hand Surface Grinder, Model G18H, 3,600 RPM, 6" X 18" Permanent Magnetic Chuck

**GRINDER - HORIZONTAL SURFACE**  
 Grand Rapids Horizontal Hydraulic Surface Grinder, Model 650, SN: 650116, 12" X 48" Electro-Magnetic Chuck, Incremental Downfeed, Coolant, (1968)

**MILLS - VERTICAL**  
 Alliant 2 HP Vertical Mill, Model 1 1/2 TMV, SN: 73043702, 2-Axis DRO, 9" X 42" Table, Power Feed On Table, 60 - 4,500 RPM Spindle Speeds  
 Alliant 2 HP Vertical Mill, Model 1 1/2 TMV, SN: 73084461, 2-Axis Dro, 9" X 42" Table, 60 - 4,500 RPM Spindle Speeds

**SAW - HORIZONTAL BAND**  
 10" X 18" Kysor-Johnson Horizontal Band Saw, Model KJ10, SN: H83021600

**MISCELLANEOUS**  
 Tool Holders, Mill Vises, Die Carts, Inspection Equipment, Renishaw Probes, Angle, Plates, End Mills, Drills, Banding Equipment, Rotary Tables, Shop Carts, Benches, Shop Fans, Tools



20" x 54" American Engine Lathe



10" X 18" Kysor-Johnson Horizontal Band Saw



6" X 18" Reid Hand Surface Grinder



Alliant 2 HP Vertical Mill



10,000 Lb Hyster Forklift



Alliant 2 HP Vertical Mill



12" X 30" Brown & Sharpe Cylindrical Grinder



## TERMS OF SALE

**G-2000 INC. TERMS AND CONDITION OF THE SALE:** These terms are subject to amendments and modifications announced by the Auctioneer at the time of the auction. Any person participating in the auction shall be bound by the following terms and conditions. The Auctioneer does not warrant the accuracy, genuineness, authenticity, description, weight, count or measure of any listings specified herein.

All bidders must register immediately upon entering the site. Everything will be sold to the highest bidder or bidders for cash in accordance with the Auctioneer's Terms and Conditions. **Payment in full is required by August 28, 2009 at 3:00 PM. All purchases require a deposit on the day of sale of not less than 25%. All payments must be made by cash, certified check, company check with a bank letter of authorization guaranteeing irrevocable payment to G-2000 Inc, or major credit card.**

**Buyer's Premium will apply for on-site credit card sales. A 13% Buyer's Premium will apply for on-line sales (if Cash, Cashier's Check, or Wire Transfer payment is received in full within 48 hours from receipt of invoice). A 16% Buyer's Premium will apply for on-line credit card sales.** All sales are final, on an "As is", "Where is", "In Place", "With all faults" basis with no conditions or warranties, whether expressed, implied, statutory or otherwise, including without limitation, warranties or conditions as to title, description, fitness for purpose, quantity, merchantability, state conditions, location or otherwise. By submitting a bid, the buyer/bidder affirms he has inspected all items before bidding. Purchasers shall be deemed to have relied entirely upon their own inspection and investigations.

Each buyer will be subject to any sales tax chargeable by city and/or the state in addition to the bid price for any asset as purchased, unless proper and acceptable evidence of a certificate of exemption is presented to G-2000 Inc. at the time of payment.

Rigging and removal of sold equipment is the sole responsibility of the buyer and must be completed by the posted date. Rigging and removal may not begin until payment has been made in full and the auction sale is complete. All heavy rigging requiring the use of forklifts, cranes, etc., whether performed by the customer or a rigging company, must present a certificate of insurance for \$1,000,000.00 naming G-2000 Inc. as the insured.

**Removal of paid equipment must be complete by September 4, 2009.**



# PUBLIC MACHINERY AUCTION

10:00 A.M. • THURSDAY, AUGUST 27<sup>TH</sup>

Doors Open at 8:00 A.M.

Inspection Wednesday, August 26th, 8 a.m. - 5 p.m. & morning of sale

**3D MACHINING**  
**7020 TELEGRAPH RD.**  
**ERIE, MICHIGAN 48133**

*Sale conducted by:*



**G-2000 Inc.**

*Machinery Auctioneers*  
**Over 25 Years of Experience**

1050 N. Westwood Ave.  
Toledo, OH 43607



PRESORTED  
FIRST CLASS MAIL  
U.S. POSTAGE PAID  
TOLEDO, OH  
PERMIT NO 811

**PUBLIC INVITED!**  
**MACHINERY AUCTION**

10:00 A.M. • THURSDAY, August 27<sup>TH</sup>

**7020 Telegraph Rd.**  
**Erie, MI 48133**

## Directions to Sale Site:

**From I-75 (North):** Take Exit 6 toward Luna Pier. Turn right at Luna Pier Rd/MI-151/MI State Rd 151. Turn left at Telegraph Rd./US 24.

**From I-75 (South):** Take Exit 210 for OH-184/Alexis Rd. toward I-280. Turn left at E Alexis Rd./OH-184. Turn right at Telegraph Rd./US 24.

## Hotel Accommodations:

**Comfort Inn North Toledo**, 445 E. Alexis Rd., Toledo, Ohio, 419-476-0170

**Hampton Inn Toledo North**, 5865 Hagman Rd., Toledo, Ohio, 419-727-8725



G-2000 Inc.

## SERVICES

### Auctioning

G-2000 Inc. is a fully licensed industrial and commercial auctioning firm and member of the National Auctioneers Association. Our staff has a total of 25 years of industrial experience. We are building our reputation by focusing on lower cost to our customers through hard work and the application of the latest in marketing technology.

***"The money you will save is the money you have earned."***

### Liquidation

The liquidation of part or all of our customer's machinery or other tangible assets is an effective strategy in today's competitive business environment. The return that our clients realize from an efficient liquidation relies heavily upon the cost of the service charged by the liquidator.

***"Get Our Bid First"***

### Warehousing

G-2000 Inc., has eighty thousand square feet of dry heated warehouse space. Because of our location I-75 at I-80/90 in Toledo, Ohio, our client's equipment is easy to show. At thirty-five cents (.35) per square foot with free unloading, we are the intelligent choice.

***"The Customer Saves Money"***

### Appraisals

Matt Robison, of G-2000 Inc., is a candidate member of the American Society of Appraisers and the National Auctioneers Association. Responsible appraisals done in accordance with USPAP are the basis for profitable lending and borrowing. Unbiased expertise is the key to accurate appraisals.

***"G-2000/USPAP—Raising the Bar"***

**View Catalog at**  
**[www.bidspotter.com](http://www.bidspotter.com)**