

SALE DATE: Tuesday, September 13th, 10:30 A.M.
Doors Open @ 8:00 A.M.

OVER
700 LOTS

PUBLIC MACHINERY AUCTION

SOLD AS IS,
WHERE IS AND
WITH ALL
FAULTS

INSPECTION: Monday, September 12th • 9:00 A.M. - 4:00 P.M. & Morning of Sale

FRANKLIN FIELD SERVICES

with Sheet Metal Equipment
at the

**G-2000 INDUSTRIAL
AUCTION CENTER**

**1050 N. WESTWOOD AVE.,
TOLEDO, OHIO 43607**

**Scott Yoder & Todd Schling
Auctioneers**

LIC #57-199876219

LIC #57-198740509

LIC #63-199876779



Logan Tool Room Lathe, Model 6510H



G-2000 Inc.

Machinery Auctioneers
Over 25 Years of Experience

Website: www.g2000inc.com

E-Mail: auctioncenter@g2000inc.com

(419) 536-4445

Fax (419) 536-4846

INSPECTION DATE
MONDAY, SEPTEMBER
12TH 9 A.M.

**DON'T MISS
THIS SALE!**

PUBLIC INVITED
Doors Open @ 8:00 A.M.



Bridgeport Vertical Mill



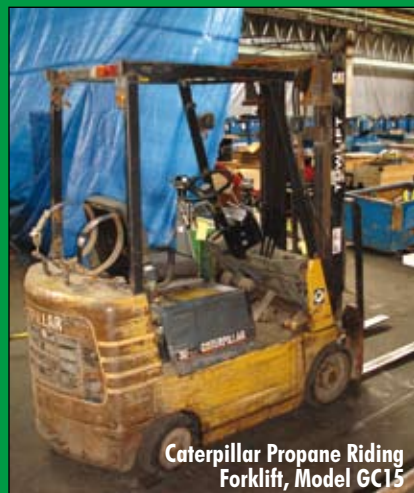
Heat Treat Machines



Curtis Tank Mounted Rotary Screw Air Compressor, Model R/S10T



Hydrovane Tank Mounted Air Compressor, Model 55CK



Caterpillar Propane Riding Forklift, Model GC15



Portable Hydraulic Power Units

AIR COMPRESSORS

Craftsman Tank Mounted Portable Air Compressor, Model 919.15678, 2 HP, 11.2 CFM Capacity

Curtis Tank Mounted Rotary Screw Air Compressor, Model R/S10T, S/N 6669E98011, 10 HP

Hydrovane Tank Mounted Air Compressor, Model 55CK, S/N 15HV271919, 15 HP

LeRoi 20 HP Tank Mounted Air Compressor, 200gal/200Max PSI

Speedaire Refrigerated Air Dryer, Model 5Z/576, S/N WG480, 36.8 CFM

FORKLIFT/PALLET LIFT

Caterpillar Propane Riding Forklift, Model GC15, S/N 2EM05234, 3000 Lb. Capacity, Cushion Tires, Side Shift

Linde Model EGU20-02, Electric Pallet Lift, S/N 710119023340, 4400 Lb. Capacity

HEAT TREAT

2-Zone Field Heat Treating Units

Automatic 6-Zone Heat Treat Machines

Automatic 9-Zone Heat Treat Machines

Ceramic Insulating Materials

Ceramic Pad Heater Cold Tails-New and Rebuilt

Channel Bank Heaters w/ Replacement Parts

Chino Solid State Temperature Recorders

Gas Combustion Firing Units

Heat Treating Insulator Covers

Hot Spot Thermal Couple Welders

Manual 6-Zone Heat Treat Machines

Manual 8-Zone Heat Treat Machines

MACHINE SHOP/WELDING

20 Ton H-Frame Shop Press

Belt Grinder/Sander, Model 351.226321, 1" Belt, 8" Disc

Bridgeport Vertical Mill, 9"X32" Table Spindle Speeds 80-2720 RPM, S/N 48495, 1 HP Spindle Motor, 2 Axis Digital Read-Out, Table Vise

Craftsman Floor Standing Drill Press, 15-1/2" Working Swing, 10"X12" Table, 1/2 HP Motor

Delta Rockwell Hand Tool and Cutter Grinder, 26"X5" Table, Universal Work Holding Attachment

K.O. Lee Tool and Cutter Grinder, Model B860-852, S/N 4510, 5"X24" Table

Licoll Arc Welder, Model AC-225-S, S/N 8370-105

Logan Tool Room Lathe, Model 6510H, S/N83961, 14" Swing over the weights, 21" between centers, Tread Dial, 8" 4-Jaw Chuck Tail Stock, Spindle Speeds 55-2000 RPM, 1-1/4" Spindle Hole

Miller Arc Welder, Model Dialarc HF, S/N JB538855, 250 Amp

Miller Rocker Arm Spot Welder, Model LMSW-53T, S/N JK529611, 2.5 KVA, 18" Throat, Spot Weld Timer

Trump Horizontal Band Saw, Model UE-180AJ, S/N 11399, 7"X12" Cutting Capacity

PIPE FITTING

5 HP Rotophase Phase Converter

500' of New 600 Volt 4/4 Primary Cable

3000' of 2-Gauge Splitter Cable

Bridge Slide Frames for Wachs

Brunson Model 75H Optical Transist

CIECO Pneumatic Air Drives

Climax Model 1149 Boring Bars with 2' to 6' Boring Bars

Climax Model 65 Key Mill

Climax Model FF-40 Flange Facing Machine, 14" to 42" capacity w/ extension kit giving it 32" to 60" capacity and optional grinder head

Climax Model PL1174 Portable Lathe with 8" to 24" capacity

Climax Small Journal Squirrel

Conditioning Transformers

Dearman Pipe Clamps up to 32" Capacity (Brand New)

Dial Indicator Units

Dimetrics End Prep Machines

Durango End Prep Machine

End Prep Mandrels

Fein Pipe Cutting Saws

Flange Facing Head

Go-Fer III-HS Torch Cutting Machine (Brand New)

Gulco Torch Cutting Machine (Brand New)

Hose Fittings

H&M Pipe Beveling Machine (Brand New)

Ingersoll Rand Pneumatic Motors

Large Quantity of Cutting Tools

Large Quantity of Split Frame Machines 14" to 70" capacity

Leeds & Northrup Potentiometer

Magnetic Base Drills

MCI Model 408 Hydraulic End Prep Machines

Micrometers

Midwest Stud Welder

Mirrors for Field Calibration

Nelson Stud Welder

Optical Precision Scales

Oster Pipe Threader, Model 6A-MT-17

Pipe Clamps



Miller Arc Welder, Model Dialarc HF



Trump Horizontal Band Saw, Model UE-180AJ



Belt Grinder/Sander, Model 351.226321



Oster Pipe Threader, Model 6A-MT-17



Hydraulic Filtration System



Brunson Model 75H Optical Transits



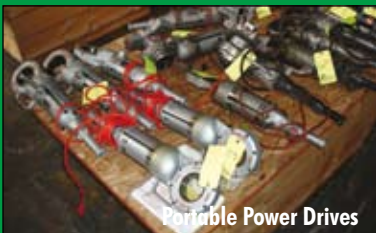
Leeds & Northrup Potentiometer



Mag. Base Drills



Calipers



Portable Power Drives



End Prep Machines



Split Frame Machines, Various Sizes

PIPE FITTING cont'd.

- Pneumatic End Preparation Tools
- Portable Hydraulic Power Units
- Rapid End Prep Grinding Wheels
- Rigid Portable Power Drives
- Secondary Cables
- Silk Model AX321 Flange Facing Machine
- Solid State Field Hardness Testers
- Splitter Cables
- Thermal Couple Lead Extension Leads
- Tri Tool Lubricator Pump (Brand New)
- Tri Tool Model 26-00 End Prep Machine
- Tri Tool Model 3033 Pneumatic End Prep Machine
- Tri Tool Pneumatic Power Drives
- Turbine Bolt Expansion Kits
- Wachs 22" to 28" Pipe Cutting Machine
- Wachs Expansion Mandrels
- Wachs Model 424 End Prep Machine
- Wachs Split Frame Machine 8" to 14" capacity
- Wachs Split Frame Machine 14" to 20" capacity
- Wachs Split Frame Machine w/ Bridge Slide

HAND TOOLS, ENGINE HOIST, TOOL BOXES

- Calipers
- Carbide Tool Bits
- Drills
- End Mills
- Hand Tools
- Hoosier Engine Hoist
- Inspection Tools
- Job Boxes
- Linde
- Pneumatic Power Tools
- Power Tools
- Rotary Tables

PLASTIC MATERIAL HANDLING EQUIPMENT

- Hydraulic Filtration System
- Norgren VMS 2100 Smart Pump Vacuum Management System

SAND BLAST CABINET

- Accu-Blast High Pressure Sand Blast Cabinet with cyclone system

SHEET METAL MACHINERY

- Pullmax Nibbler, Model P3/3, SN 55264, 42" throat
- Dreis & Krump Manual Box & Pan Brake, Model L-37, SN 95243, 8' max. bending length
- Dreis & Krump Manual Leaf Brake, Model S-816, SN 307460, 8' x 16 ga.
- Dreis & Krump Manual Leaf Brake, Model 520, SN 76423, 5' x 20 ga.
- Tensmith Manual Box & Pan Brake, Model U48-22, 48" max. bending length
- Pexto Power Plate Bending Roll, Model 390-D, SN 47, 36" x 16 ga.
- Pexto Manual Plate Bending Roll, Model 381L, 36" rolls x 2" dia.
- Vermette Manual Die Lift, Model 10-12A, 1,000 lb. capacity
- Lincoln Gas Portable Arc Welder, Model Ranger 8, SN U1960604226
- Dreis & Krump Manual Leaf Brake, Model 818, SN 109643, 8' x 18 ga
- Pexto Power Plate Bending Roll, Model 418E, SN 3774, 48" x 18 ga.
- Hobart RC-256 Mig Welder, SN 80W50582, w/Wire Feeder
- Hobart RC-250 Mig Welder, SN 12RT-69149, w/Wire Feeder
- (2) Lockformer Button Punches - Snaplock Machines, 20 ga., SN BL2821 & SN 2822
- Lockformer Standing "S" Cleat Machine, SN SC538, 3-ports, Big "S" & Standing Screw
- Lockformer Pittsburg Machine, 18 w/3-1 & T-Collar
- Lockformer Pittsburgh Machine, 20, superspeed, SN SS1900
- Lockformer Pittsburgh/PIP Lock Machine, 16, SN 1155
- Lockformer Power Flanger, 16 ga., SN 1463
- Dyna Pak Air Plasma Cutter, 40 amp
- Pexto Arrow Barfold, 30"

VEHICLES

- Chevrolet Cheyenne 2500 Pick-Up Truck, VIN# 1GCGC24R9WE121809, New in 1997, Mileage 160,549, Automatic Transmission, Air, 8' Bed, Leather Bench Seat
- Chevrolet Cheyenne 2500 Pick-Up Truck, VIN# 1GCGC24R1WE121738, New in 1997, Mileage 191,700, Automatic Transmission, Air, 8' Bed, Leather Bench Seat
- Ford F-350XL Box Truck, Single Axle, Dual Tire, VIN# 1FDJF-37G3REA14364, New in 1994, Mileage 182,554, Unleaded Fuel, 12' Box
- Ford F-350 Custom, Box Truck, Single Axle, Dual Tire, VIN# 1FDKF37G7LKA51947, New in 1989, Mileage 81,347, Unleaded Fuel, 12' Box

MISCELLANEOUS

- 2 Door Steel Storage Cabinets;
- 44" (5) Drawer Steel Blue Print Cabinets;
- Commercial Blowers;
- Computer Systems;
- Electric Hoists;
- Gang Boxes;
- Gas Powered Blowers;
- Ladders;
- Minolta EP-4210 Copier;
- Monitors;
- Office Chairs;
- Office Desks;
- Office Tables;
- Pallet Lifts;
- Portable Die Carts;
- Printers;
- Pumps;
- Shop Vac;
- Steel Shelving Cabinets;
- Steel Shelving Units;
- Tools;
- Transformers;
- Galvanized Pipe (2" diameter x 20'), 17 available;
- Lighting System (9) 8' ballasts, (17) 4' fixtures; (17) GE bulbs with shatter proof jackets, pallet jacks



Craftsman Tool Boxes



Gang Boxes



Steel File Cabinets



Sand Blast Cabinet



Norgren Smart Pump 1200 Vacuum Management System



PUBLIC INVITED

PUBLIC MACHINERY AUCTION

TUESDAY, SEPTEMBER 13TH

10:30 A.M. • DOORS OPEN AT 8:00 A.M.

**FRANKLIN
FIELD SERVICES**
@ G-2000 INDUSTRIAL AUCTION
CENTER

Sale conducted by:



G-2000 Inc.

Machinery Auctioneers

Over 25 Years of Experience

1050 N. Westwood Ave.
Toledo, OH 43607



PRESORTED
FIRST CLASS MAIL
U.S. POSTAGE PAID
TOLEDO, OH
PERMIT NO 727

PUBLIC MACHINERY AUCTION

@ G-2000 INDUSTRIAL
AUCTION CENTER
1050 N. WESTWOOD AVE.
TOLEDO, OHIO 43607

Directions to Auction Site:

From I-75/in Toledo/ get off on the Douglas Rd.
exit and follow Douglas South. Road name changes
to Westwood. Pass Dorr St., 1050 N. Westwood
Avenue on the left.

Hotel Accommodations:

Comfort Inn 3560 Secor Rd., Toledo, OH 43606,
(419)531-2666

Clarion Hotel Westgate 3536 Secor Rd., Toledo,
OH 43606, (419)535-7070



TERMS OF SALE

G-2000 INC. TERMS AND CONDITION OF THE SALE: These terms are subject to amendments and modifications announced by the Auctioneer at the time of the auction. Any person participating in the auction shall be bound by the following terms and conditions. The Auctioneer does not warrant the accuracy, genuineness, authenticity, description, weight, count or measure of any listings specified herein.

All bidders must register immediately upon entering the site. Everything will be sold to the highest bidder or bidders for cash in accordance with the Auctioneer's Terms and Conditions. **Payment in full is required by September 14, 2005 at 3:00 P.M. All purchases require a deposit on the day of sale of not less than 25%. All payments must be made by cash, certified check, major credit card or company check with a bank letter of authorization guaranteeing irrevocable payment to G-2000 Inc.**

A 10% Buyer's Premium will apply for on site sales. All sales are final, on an "As is", "Where is", "In Place", "With all faults" basis with no conditions or warranties, whether expressed, implied, statutory or otherwise, including without limitation, warranties or conditions as to title, description, fitness for purpose, quantity, merchantability, state conditions, location or otherwise. By submitting a bid, the buyer/bidder affirms he has inspected all items before bidding. Purchasers shall be deemed to have relied entirely upon their own inspection and investigations.

Each buyer will be subject to any sales tax chargeable by city and/or the state in addition to the bid price for any asset as purchased, unless proper and acceptable evidence of a certificate of exemption is presented to G-2000 Inc. at the time of payment.

Rigging and removal of sold equipment is the sole responsibility of the buyer and must be completed by the posted date. Rigging and removal may not begin until payment has been made in full and the auction sale is complete. All heavy rigging requiring the use of forklifts, cranes, etc., whether performed by the customer or a rigging company, must present a certificate of insurance for \$1,000,000.00 naming G-2000 Inc. as the insured.

Removal of paid equipment must be complete by 4:00 pm on September 16th, 2005.