

SALE DATE: Thursday, May 27th, 10:30 A.M.

ORDERED BY
SECURED
CREDITOR

PUBLIC MACHINERY AUCTION

EVERYTHING
MUST GO!

INSPECTION: Wednesday, May 26th • 9:00 A.M. - 4:00 P.M.

McGuire
STEEL ERECTION, INC.
7081 Dan McGuire Drive
Brighton, MI

TAKE A LOOK!
THESE ITEMS AND MORE...

**DON'T MISS
THIS SALE!**

**ALL THIS
AND
MORE!**



Grove 40 Ton Rough Terrain Cranes

Sale conducted by:

Scott Yoder,
Auctioneer
G-2000 Inc.



G-2000 Inc.

Machinery Auctioneers

1050 N. Westwood
Toledo, Ohio 43607

Website: www.g2000inc.com

E-Mail: sales@g2000inc.com

(419) 536-4445

Fax (419) 536-4846

TRUCK CRANES

Grove Model TMS-522 22-Ton Hydraulic Truck Crane, s/n 49013, 70' boom, 23' tuck-under jib, Cummins V555 diesel, power out and down outriggers, 6 x 4 carrier with 13 speed
Grove Model TMS-185A 18-Ton Hydraulic Truck Crane, s/n 44726, 24730, 32' to 80' boom, 26' swing-away a-frame jib, Cummins diesel, power out and down outriggers, 6 x 4 carrier with 13 speed, 2 available
Manitowac Model 2900T Series II 70-Ton Conventional Truck Crane, s/n 29306, 160' pinned tubular main boom, 60' pinned tubular jib, Cummins NH series upper diesel, rebuilt 2001, Hendrickson 8 x 4 carrier, Cummins NH series lower diesel



Grove Model TMS-522 22-Ton & Model TMS-185A 18-Ton Hydraulic Truck Cranes

**PUBLIC
INVITED!**



Manitowac Model 2900T Series II 70-Ton Conventional Truck Crane

PUBLIC MACHINERY AUCTION • THURSDAY, MAY 27TH • 10:30



**Ingersoll-Rand Model 175
175 cfm Portable Air Compressor**

AIR COMPRESSORS

Ingersoll-Rand Model 160-160 cfm Portable Air Compressor, s/n 192456-U91-144, age 1991
Ingersoll-Rand Model 175-175 cfm Portable Air Compressor, s/n 151311-U85-953, 169612-U-88-317, Deutz Diesel, trailer mounted, 2 available

BACKHOE

Case Model 580C Loader Backhoe, s/n 8952907, diesel, 4-speed manual shift, 2-wheel drive, Extend-A-Hoe, enclosed cab, 1-1/4 yard loader bucket



**1986 Ford Model F800
11-Ton Single Axle Boom Truck**

BOOM TRUCK

Ford Model F800 11-Ton Single Axle Boom Truck, VIN 1FDPK84NOGVA32081; R.O. Simon Model TC110-55 11-ton hydraulic boom, 56' boom, 20' swing-away jib, F & R stabilizers, Ford diesel 5x2 transmission, age 1986

CRANES-HYDRAULIC ROUGH TERRAIN

Grove Model RT740 40-Ton Rough Terrain Hydraulic Crane, s/n 49212, 34' to 104' boom, 32' swing-away a-frame jib, auxiliary winch, 6C-53 Detroit Diesel, age 1981, 3 available

Grove Model RT65S 30-Ton Rough Terrain Hydraulic Crane, s/n 31623, 34' to 81' boom, 32' swing-away a-frame jib, Cummins V555 diesel, age 1975, 2 available



**Grove Model RT65S
30-Ton Rough Terrain Hydraulic Crane**



**Grove Model RT740
40-Ton Rough Terrain Hydraulic Crane**

FLATBED STAKE TRUCKS

1994

Ford Model F700 Single Axle Flatbed Stake-Side Truck,

VIN 1FDBF79H0HVA50913, 20' wood deck bed, steel bulkhead, metal stake sides, age 1987

Ford Model F450 Super Duty Welder's Stake-Side Truck, VIN 1FDLF47M8REA37269, 7.3L diesel, automatic, 14' steel welder's bed with rack, torch well and gang box, 5 available

Ford Model F350 1-ton pickup truck, VIN 1FTHF35F4TEA53498, 2-WD, long bed, 7.3L turbo diesel 5-speed, dual tanks, steel welder's rack, 3 available



**Ford Model F450 Super Duty
Welder's Stake Side Truck**



**Ford Model F450 Super Duty
Welder's Stake Side Truck**



**Ford Model F450 Super Duty
Welder's Stake Side Truck**



**Ford Model F350XL 1-Ton
Welder's Stake Side Truck**



**Ford Model F350
1-Ton Pickup**

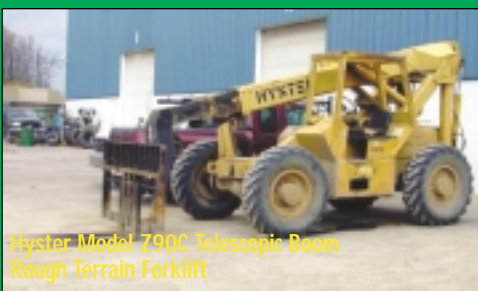
FORKLIFTS

Sellick Model Magnum 60-TX 6000 lb. Forklift Truck, s/n CT62005H3383, 6000 lb. capacity @177" lift, 2500-lb. capacity @269" lift, diesel, 2-wheel drive, side shift, 4' forks, age 1986

Clark Model C500-45 4000 lb. Capacity LP Gas Forklift Truck, s/n 355-832-2548, 189" lift, side shift, age 1973

Yale Model GLC-070-LBMSBT 7000 lb. Capacity LP Gas Forklift Truck, s/n 346420, solid tires, 180" lift, 72" forks, age 1979

Hyster Model Z90C Telescopic Boom Rough Terrain Forklift, 9000-Lb. capacity @ 21' reach, 7000-Lb. capacity @ 39' maximum lift, age 1989



**Hyster Model Z90C Telescopic Boom
Rough Terrain Forklift**

GENERATORS

Cummins Standby Emergency Duty Generator Set, Model 5AT1224552C1, 350 kW, 500 kVA, 3/60/80, 105°C, F Class Insul. Engine Model VT12-700-GS, 5506 hours



**1987 Ford Model F799 Single Axle
Flatbed Stake-Side Truck**



**1995 GMC Model 3500 HD Flatbed
Stake-Side Truck**

PUBLIC INVITED!



**Sellick Model Magnum 60-TX 6000-Lb.
Rough Terrain Forklift Truck**



**Clark Model C500-45 4000-Lb. Capacity
LP Gas Forklift Truck**

DON'T MISS THESE GREAT DEALS AND MORE!

PROXY BIDS

If you cannot attend this sale we will bid on your behalf. Contact our office at (419) 536-4445 for instructions.

PICKUP TRUCKS

Ford Model F250XL Pickup Truck, 3 available, ages 1996-1997

Ford Model F150 4-WD Super Cab Style Side Pickup Truck, VIN 2FTRX18W3YCA23780, VIN 2FTRX18LYCA79706, VIN 2FTZX08W7WCA92544, age 2000, 3 available



1997 Ford Model F250 Heavy Duty Pickup



1997 Ford Model F250 Heavy Duty Pickup



1997 Ford Model F250 Heavy Duty Pickup



1996 Ford Model F250XC Heavy Duty Pickup



1998 Ford Model F150 Super Cab Flare Side Pickup



1995 GMC Model 3500 1-Ton 4x4 Extended Cab-Dually Pickup

PORTABLE STUD WELDING RIGS

Portable Stud Welding Rig, (1) Pro Weld International Model Arc 3000 stud welding power supply, s/n 3000-190-0601, amp range 425-3000 amps, stud diameter range 1/4" to 1-1/4", dual gun set-up with (2) stud guns, lead, and control cable; (1) EM Type BRKT 281 kvs AC Generator, s/n 573191111, V-12 Detroit diesel, 240/480-volt 676/338 amps, 3-phase, 60 cycle; (1) 500 gallon fuel tank with transfer pump, mounted on 40' tandem axle flatbed semi-trailer, electrical wiring and switchgear, enclosures
Case Portable Stud Welding Rig, (1) Neison/TRW part no. 750-456-001 stud welding power supply, s/n JB511785, amp range 250 to 575 amps, dual gun set-up with stud guns, leads and control cables; (1) E-M approximately 275kW AC generator, V8 Detroit diesel, (1) 500-gallon fuel tank, with pump, mounted on 35' tandem axle drop deck flatbed semi-trailer, electrical wiring and switchgear, enclosures



Stud Welders

SCISSORS LIFT WORK PLATFORM

Snorkel Model SL25 Battery Powered Scissors Lift Aerial Work Platform, s/n 9623590696, 26' maximum platform height, 850-lb. capacity, 36" x 98" platform, age 1996

Up-Right Tiger Model F5018 Battery Powered Scissors Lift Aerial Work Platform, s/n 1881, 1804, 18' maximum platform height, 900-lb capacity, 40" x 58" platform, 4:00x8 tires, 2 available

Calavar Condor Model 2035 Battery Powered Scissors Lift Aerial Work Platforms, 20' maximum platform height, 750-lb capacity, 35" x 79" platform



Snorkel Model SL25 Battery Powered Scissors Aerial Work Platform

SEMI TRACTORS

Mack Model CL753 Elite Series Michigan Special Truck Tractor, VIN 1M2AD28Y0T001290, 425 hp, 3406-Cat, Fuller 13 speed, double frame, air ride, wet kit, age 1996

SEMI TRAILERS

Trail King Model TK110HDG-513 HG Series 50-Ton Tri-Axle Lowboy Trailer, VIN 1TKJ051312B098529, non-ground bearing hydraulic detachable gooseneck, air ride suspension, wet kit hook-ups, age 2001

Ravens Model 1444A65 44' Tandem Axle Aluminum Flatbed Trailer, VIN 1R1F04421PJ933745, 10'2" Air Ride Spread, 96"



1996 Mack Model CL753 Elite Series Michigan Special Truck Tractor
2001 Trail King HG Series 50-Ton Tri-Axle Lowboy Trailer

Sale conducted by:



G-2000 Inc.

Machinery Auctioneers

Over 25 Years of Experience



SHOP AND FIELD EQUIPMENT

Parker Hydraulic Hose Fitting Press, with power unit, crimping dies, hose and fittings
Ramco Model RP55 55-Ton H-Frame Hydraulic Shop Press, s/n 10188
Rotary 9000 lb. Capacity 2-Post Floor Standing Automotive Lift
Ramco 5000 lb. Capacity Portable Hydraulic Shop Crane, s/n 101638
Hyd-Mech Model S-23 18" x 16" Hydraulic Horizontal Metalcutting Band Saw, s/n X1098004, variable blade speeds, 75 to 300 fpm, coolant, manual clamping, miter head, 5-hp
Miller Model Millermatic 250 200-amp CC/CV DC Wire Feed Welder, s/n LA 191638, 60% duty cycle, age 2000
Coats Model 5060A Rim Clamp Tire Changing Machine
Doringer Model D350 12" Cold Type Cut-Off Saw, s/n 20760, manual clamping and blade feed, miter head, coolant, 1.2/2.4-kW, age 1998
Geka Hydracro Model 55/A 55-Ton Hydraulic Ironworker, s/n 9776, angle capacity: 4-1/2" x 4-1/2" x 3/8", flat shear capacity: 12" x 5/8", rounds capacity: 1-9/16", squares capacity: 1-9/16", maximum punch: 1-1/2" diameter thru 3/8", with punching, coping, angle flat rounds and squares shear, and assorted punches
Ramco Model RS90P Horizontal Metalcutting Band Saw, s/n 10124
Handy Bend Model HPB-120 Universal Metal Bending Brake Press, bending capacities: 1/4" x 10" to 5/8" x 2-1/2", with pipe/conduit bender
Hypertherm Model Power Max 900 55-Amp Plasma Cutter, s/n 900-015096, 50/100% duty cycle @ 55/39-amps
2-Ton x 25' Span Underhung Single Girder Bridge Crane, Coffing 2-ton electric chain hoist, and 4-way pendant controls
Acra Model RL79DPF12343 12-Speed 22" Drill Press, s/n 03247, age 1998
Black & Decker Valve Resurfer, with accessories
Phoenix Model 16ST Dry Rod Electrode Oven
Hotsy Model 5832A Natural Gas Fired Stationary Pressure Washer, s/n H12236-0888, 1800-psi, 6 gpm, 540,000-Btu/Hr., 7-1/2 hp pump, chemical metering
Crown Model 20MT 2000-lb Capacity Battery Powered Lift Cart, s/n 1A127952
Case Model C20 5-hp Vertical Tank Mounted 2-Stage Air Compressor, s/n 00528
Clemco Model 1648 Pressurized Sand Blast Pot, 3.0 C.F. capacity



Ramco Model RP55 55-Ton H-Frame Hydraulic Shop Press



Trailer Tool Crib



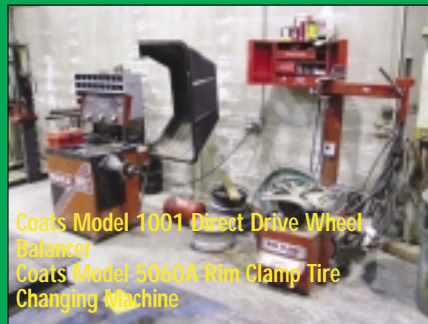
Hotsy Model 5832A Natural Gas Fired Stationary Pressure Washer



Ramco Model RP55 55-Ton H-Frame Hydraulic Shop Press



2-Ton x 25' Span Underhung Single Girder Bridge Crane



Coats Model 1001 Direct Drive Wheel Balancer
Coats Model 5060A Rim Clamp Tire Changing Machine

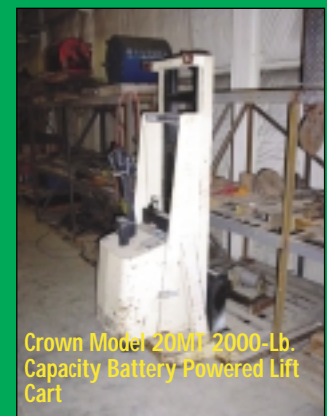
**PUBLIC AUCTION
THURSDAY, MAY 27TH
10:30 A.M.**



Doringer Model D350 12" Cold Type Cut Off Saw



Geka Hydracro Model 55/A 55-Ton Ironworker



Crown Model 20MT 2000-Lb. Capacity Battery Powered Lift Cart



Ramco Model RS90P Horizontal Metalcutting Band Saw
Acra Model RL79DPF12343 12-Speed 22" Drill Press

**INSPECTION
WEDNESDAY, MAY 26TH
9 A.M. - 4 P.M.**

**PUBLIC
INVITED!
DON'T
MISS THIS
SALE!**

PUBLIC MACHINERY AUCTION • THURSDAY, MAY 27TH • 10:30 A.M.

WELDERS

Miller Model Big Blue 402D Diesel CC DC Welder Generator, s/n KJ183526, welding range 55 to 600 amps, 4.0-kW AC power output, age 1998, 2 available
Miller Model Big 40D Diesel CC DC Arc Welder Generator, s/n JJ477611, 350/300-amps, 3.0-kW AC power output, on single axle trailer, x 8 available
Miller Model Big 30 Diesel CC DC Arc Welder Generator, s/n JG026399, welding range 40 to 325-amps, shop built single axle trailer, 9 available
Miller Model Big 25D Arc Welder Generator, s/n JF828909, Duetz diesel, 100% duty cycle @250-amps, shop built single axle trailer, 4 available
Case Model Miller Model Big 20G DC Arc Welder, s/n HK322775, welding range 40 to 300 amps, Continental gas engine, 2.5 kW AC power output, shop built single axle trailer, 9 available



Miller Model Big 40D Diesel Arc Welder Generator



Miller Model Big 30A Diesel CC-DC Arc Welder Generator



Miller Model Big 25D DC Arc Welder Generator

Miller Bobcat Model 225NT Multipurpose Series 8500-watt CC/CV AC/DC Welder Generator, s/n LA141432, weld output 225 AC/210 DC-amps @ 100% duty cycle, 8.0 kW continuous AC power output, Onan Performer gas engine, 9 available
Miller Model Legend AEAD-200LE CC AC/DC Welder Generator, s/n KA903831, 100% duty cycle @ 225 AC/200 DC-amps, 5.0-kW AC power output, Onan performer 18XLS gas engine, 16 available



Miller Model Big 20G DC Arc Welder Generator

Lincoln Model Shield Arc SAM-650 Multipurp. Constant/Variable Voltage DC Arc Welding Power Source, s/n A1164712, diesel, tandem axle trailer, with auxiliary Delta 100-Gallon Fuel Tank, 2 available
Lincoln Model SA200 Welder Generator, s/n A-735053, Continental F163 gas engine, mounted on single axle trailer



Welders

ROUGH TERRAIN 4 WD AERIAL PLATFORM LIFTS

Genie Model S60-4WD Telescopic Boom Aerial Work Platform, 60' maximum height, 51' maximum reach, 8' platform, 4 available



Genie Model S60-4WD Telescopic Boom Aerial Work Platform

Genie Model S80-4WD Aerial Lift, 80' maximum height, 8' platform, diesel, 1998

MISCELLANEOUS SHOP SUPPLIES

Hand tools, power tools, torch sets, floor jacks, jack stands, transmission jacks, engine hoist, engine stand, welding tables, cabinets, flammable storage cabinets, oil containment and pumping station, storage racks, assorted spare engines/transmissions/differentials, pallet jack, etc.

MISCELLANEOUS FIELD SUPPLIES

Torch hose, welding leads, electrical cords, air hose, rope, rigging, cables, hooks, slings, snatch blocks, shackles, safety netting, safety harness, joy air cable winch, electric hoists, gang boxes, port-a-powers, hand jacks, chop saws, chain falls, come-a-longs, wire feeders, air line regulators, filters, Hilti-Ranco fastener guns, hammer drills, transit/levels/lasers, Oxygen/Acetylene torches and regulators, C-clamps, electric hand grinders, drill motors, Slugger and Milwaukee mag drills, pneumatic impact wrenches, 110-volt electric cable winches, screw guns, wood extension ladders, step ladders, roust-a-bouts, cable lifts, scaffolding, pic's, etc.

OFFICE FURNITURE

Executive desks, secretarial desks, computers, copier, file cabinets, supply cabinets, chairs



G-2000 Inc.

Do You Know of a Plant Going Out of Business?

Call Us!

We pay upfront cash referrals.

DO YOU NEED AN APPRAISAL? CALL US!

TERMS OF SALE

G-2000 INC. TERMS AND CONDITION OF THE SALE: These terms are subject to amendments and modifications announced by the Auctioneer at the time of the auction. Any person participating in the auction shall be bound by the following terms and conditions. The Auctioneer does not warrant the accuracy, genuineness, authenticity, description, weight, count or measure of any listings specified herein.

All bidders must register immediately upon entering the site. Everything will be sold to the highest bidder or bidders for cash in accordance with the Auctioneer's Terms and Conditions. **Payment in full is required by May 28, 2004 at 3:00 P.M. All purchases require a deposit on the day of sale of not less than 25%. All payments must be made by cash, certified check, company check with a bank letter of authorization guaranteeing irrevocable payment to G-2000 Inc, or major credit card.**

A 10% Buyer's Premium will apply at this sale. All sales are final, on an "As is", "Where is", "In Place", "With all faults" basis with no conditions or warranties, whether expressed, implied, statutory or otherwise, including without limitation, warranties or conditions as to title, description, fitness for purpose, quantity, merchantability, state conditions, location or otherwise. By submitting a bid, the buyer/bidder affirms he has inspected all items before bidding. Purchasers shall be deemed to have relied entirely upon their own inspection and investigations.

Each buyer will be subject to any sales tax chargeable by city and/or the state in addition to the bid price for any asset as purchased, unless proper and acceptable evidence of a certificate of exemption is presented to G-2000 Inc. at the time of payment.

Rigging and removal of sold equipment is the sole responsibility of the buyer and must be completed by the posted date. Rigging and removal may not begin until payment has been made in full and the auction sale is complete. All heavy rigging requiring the use of forklifts, cranes, etc., whether performed by the customer or a rigging company, must present a certificate of insurance for \$1,000,000.00 naming G-2000 Inc. as the insured.

Removal of paid equipment must be complete by June 4, 2004.

INSPECTION MAY 26TH • 9 A.M. - 4 P.M.

PUBLIC MACHINERY AUCTION

10:30 A.M. • THURSDAY, MAY 27TH

7081 Dan McGuire Drive • Brighton, MI

**McGUIRE STEEL
ERECTION, INC.**

Sale conducted by:



G-2000 Inc.

Machinery Auctioneers
Over 25 Years of Experience

1050 N. Westwood Ave.
Toledo, OH 43607



PRESORTED
FIRST CLASS MAIL
U.S. POSTAGE PAID
TOLEDO, OH
PERMIT NO 727

PUBLIC INVITED! **MACHINERY AUCTION**

10:30 A.M. • THURSDAY,
MAY 27TH

McGUIRE STEEL ERECTION, INC.
7081 DAN McGUIRE DRIVE
BRIGHTON, MICHIGAN

Directions to Sale Site:

From Detroit Metropolitan Airport: Leaving Detroit Metro Airprt take I-94 towards Chicago (3.5 miles) to I-275N (exit 194). Follow I-275N (18 miles) to I-96W (exit 165) towards Lansing. Follow I-96W (15 miles) to Kensington Rd. (exit 151) and head south on Kensington Rd. Follow Kensington Rd. south (1 mile) to Emerson Dr. and turn right (west). Follow Emerson Dr. west (.5 miles) to Dan McGuire Dr. and turn right (north) into the sale site.

Hotel Accommodations:

Holiday Inn Express 8079 Challis Drive,
Brighton, Michigan 48116, 810-225-4300

Courtyard by Marriot - 7799 Conference Center
Drive, Brighton, Michigan 48114, 810-225-9200



G-2000 Inc.

SERVICES

Auctioning

G-2000 Inc. is a fully licensed industrial and commercial auctioning firm and member of the National Auctioneers Association. Our staff has a total of 25 years of industrial experience. We are building our reputation by focusing on lower cost to our customers through hard work and the application of the latest in marketing technology.

"The money you will save is the money you have earned."

Liquidation

The liquidation of part or all of our customer's machinery or other tangible assets is an effective strategy in today's competitive business environment. The return that our clients realize from an efficient liquidation relies heavily upon the cost of the service charged by the liquidator.

"Get Our Bid First"

Warehousing

G-2000 Inc., has eighty thousand square feet of dry heated warehouse space. Because of our location I-75 at I-80/90 in Toledo, Ohio, our client's equipment is easy to show. At thirty-five cents (.35) per square foot with free unloading, we are the intelligent choice.

"The Customer Saves Money"

Appraisals

G-2000 Inc. is a candidate member of the American Society of Appraisers and the National Auctioneers Association. Responsible appraisals done in accordance with USPAP are the basis for profitable lending and borrowing. Unbiased expertise is the key to accurate appraisals.

"G-2000/USPAP—Raising the Bar"