

SALE DATE: Tuesday, June 13th, 10:30 A.M.
Doors Open @ 8:00 A.M.

PUBLIC MACHINERY AUCTION

**SOLD AS IS,
WHERE IS AND
WITH ALL
FAULTS**

INSPECTION: Monday, June 12th • 9:00 A.M. - 4:00 P.M. & Morning of Sale

MOORE IRONWORKS, INC.

**1791 DOWLING DRIVE
OWASSO, MI 48867**

**Scott Yoder & Todd Schling
Auctioneers**

LIC #57-199876219
LIC #57-198740509
LIC #63-199876779



G-2000 Inc.

**Machinery Auctioneers
Over 25 Years of Experience**

Website: www.g2000inc.com

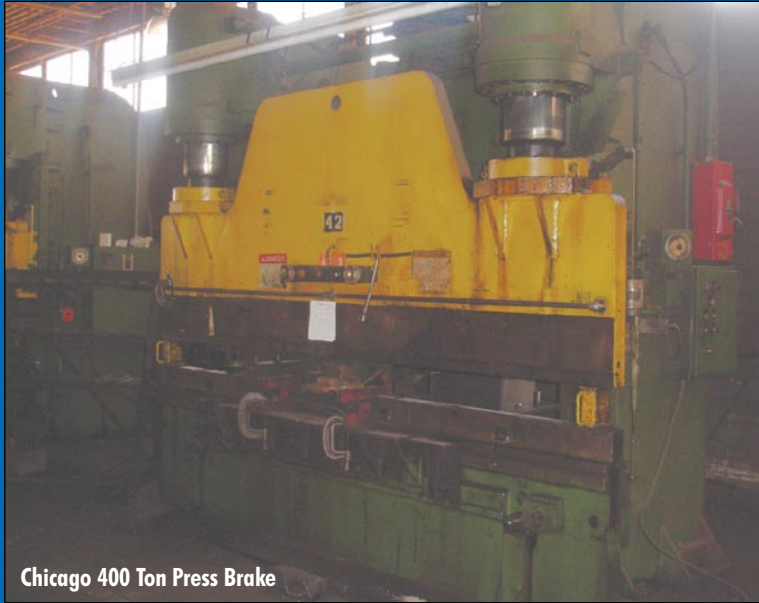
E-Mail: auctioncenter@g2000inc.com

(419) 536-4445

Fax (419) 536-4846

INSPECTION DATE

**Monday, JUNE 12th
9 A.M.**



Chicago 400 Ton Press Brake

PRESS BRAKES
Chicago Hydraulic Press Brake, Model 400 F8, 400 Ton, Bed 12', Bet Housing 8'6", 12" Throat, Pad Palm Buttons, SN 41402, 2 available

Chicago Hydraulic Press Brake, Model 6006A, 600 Ton, SN 1131, Throat Depth 14", Bet. Housings 10'6", Bed 14", Pit Depth 36"

DON'T MISS THIS SALE!

**PUBLIC INVITED
Doors Open @ 8:00 A.M.**



Chicago 600 Ton Press Brake

**PUBLIC MACHINERY AUCTION • TUESDAY, JUNE 13th • 10:30
MOORE IRONWORKS, INC. • DOORS OPEN AT 8 A.M.**

PUBLIC INVITED • DON'T MISS THIS SALE • THESE ITEMS AND MORE!



AMC Flame Burner



Clark "Paperworker" Electric Walkie Type Forklift Truck



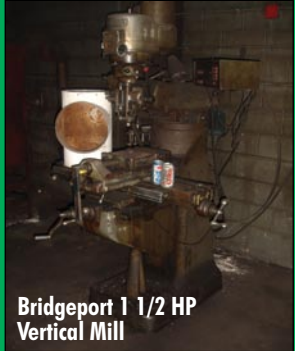
Fork Lift Truck



Fork Lift Truck



Uni Hydro Ironworker



Bridgeport 1 1/2 HP Vertical Mill



20' x 8' x 6' Water Wash Free Standing Paint Booth

AIR COMPRESSORS

Sullair Model 12BS-50L-ACAC 50 HP, Single Stage Rotary Screw Type Air Compressor, SN 003-70374, Capacity 235 CFM, 100 PSIG

CRANES

Reliable 5 Ton x 60' Single Girder Overhead Traveling Bridge Crane, With Electric Hoist and Trolley, 6 Way Pendant Control

CM Chain Hoist, Model-L, 1 Ton

Acco Wright Chain Hoist, 1 Ton

CM Chain Hoist, Model-LL, 1 Ton

CM Chain Hoist, Model-J, 1/2 Ton

Comet Chain Hoist, SN 15285H, 1 Ton

DRILLS - SINGLE SPINDLE

Clausing SS Drill, 18" x 16", Manual Feed, Vari Speed

Clausing Model 2276 Drill Press

Colburn SS Drill, Model D-3, 18" x 24" Table, SN 174

FLAME BURNER

Victor Model VCM200 110 AC Line Burner, With Two 6' Tracks

AMC Flame Burner, Model AMC4CDC, SN 2772, North East Electronics, Table Capacity 48" x 96", Age 2000

FORK TRUCKS

Caterpillar Forklift, Model GP40, SN 1CM02557, 8,000 lb. Capacity, Fork 48", Propane, Cushion Pneumatic, Side Ship

Halla Forklift Model HDF45A, 10,000 Capacity, Diesel Motor, 6' Forks, Pneumatic, Side Ship

Clark "Powerworker" Electric Walkie Type Forklift Truck, Model 20TFE, SN TT-F83EK187, 2,000 Lb. Capacity

IRONWORKER

Uni Hydro Ironworker, Model 66-24, SN 3P661107X

MILLS - VERTICAL

Bridgeport 1 1/2 HP Vertical Mill, SN 180574, 9" x 42", 2-Axis Readout

NOTCHERS

Whitney Notcher, Model 11-020, Hyd. Coper, 37 ton, SN 611-OPC-25300

PAINT BOOTH & EQUIPMENT

20' x 8' x 6' Water Wash Free Standing Paint Booth, With Pumps, Filters and Blowers

Graco Portable Air-less Paint Sprayer, Electric

Graco Stationary Air Operated Paint Pumps



Hypotherm Plasma Cutter



Hotsy Power Washer



Bobcat Hydraulic Power Broom

PLASMA CUTTERS

Hypotherm Plasma Cutter, Model Max70, SN MX70-001720

Hypotherm Plasma Cutter, Model Max100, SN 70-009229

POWER BROOM

Bobcat Hydraulic Power Broom, 60" Width, Fork Mounted w/ Hydraulic Motor

POWER WASHER

Hotsy Power Washer, Model 991A, SN H393510198, 2000 PSI

PRESS - KNUCKLE JOINT

Toledo 600 Ton Knuckle Joint Press, Model 664A, 10" Stroke, 20" S.H. Over Bed, 38" x 40" Bed, 30" x 32" Ram, Air Clutch, K.O. Ram, Floor Standing

PRESS - STRAIGHT SIDE

Bliss Straight Side Press, Model 8C, 200 Ton, 12" Stroke, 42" x 84", 17" S.H. Over Bed, 5" Thick Bolster, Ram Adj. 6", Floor Standing, Air Clutch, Double Backboard

PRESS BRAKES

Chicago D & K Press Brake, Model 46-C, 75 Ton, SN 14170, Bed 6', Bet. Housings 4'6", 8" Throat

Cincinnati Press Brake, 90 Ton, SN 12308, Bed 10', Bet. Housings 6'6", Throat 9", Power Ram Adj.

Cincinnati Press Brake, Model 90-8, 135 Ton, Bed 10', Bet Housing 8'6", Stroke 3", 8" Throat, Motorized Ram Adj., Friction Clutch, Foot Treadle, Floor Standing, SN 25737

Chicago Hydraulic Press Brake, Model 510 DSP, 150 Ton, 10' x 1/4", Bet Housing 10', 8" Throat, Bed Length 12' Ram, Foot Treadle, Upper Die Holders, Friction Disc Clutch, Floor Standing, SN 08226

Chicago Hydraulic Press Brake, Model 400 F8, 400 Ton, Bed 12', Bet Housing 8'6", 12" Throat, Pad Palm Buttons, SN 41402, 2 available

Chicago Hydraulic Press Brake, Model 6006A, 600 Ton, SN 1131, Throat Depth 14", Bet. Housings 10'6", Bed 14', Pit Depth 36"



Bliss Straight Side Press



Toledo Knuckle Joint Press



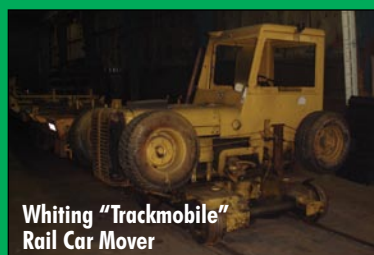
Press Brake



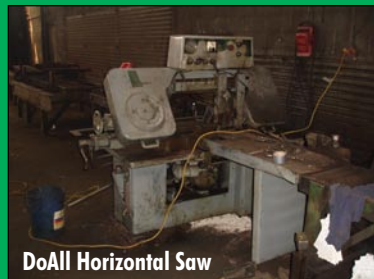
Paint Sprayer



Press Brake



Whiting "Trackmobile"
Rail Car Mover



DoAll Horizontal Saw



Stone Abrasive Cutoff



Peerless "Mechani-Cut" Horizontal
Metal Cutting Hack



Toledo Scale

RAIL CAR MOVER

Whiting "Trackmobile" Railroad
Switching Car, Model 3TM,
SN 3TM3140, with Ford Industrial Engine,
Single Coupler Sanders

SANDERS/BELT

Porter Cable Vertical Sander, 15" wide

SAWS

DoAll Horizontal Saw, Model C-69,
SN 155-66966, Ent. & Exit Roller Conveyor

Stone Abrasive Cutoff Saw, Model
M160, Cap. 12" x 16", 1900 RPM, 20"
Blade, 15 HP, SN 0115

Peerless "Mechani-Cut" Horizontal
Metal Cutting Hack Saw, SN M11-941-B

SCALES

Toledo Scale, Model 2151, SN
5177236450 Lb. Capacity, 60" x 48" About
Ground Platform

SURFACE GRINDERS

Abrasive 6" x 18" Surface Grinder,
Hand Feed, Electro Mag Chuck

WELDERS

Lincoln Idealarc Welder,
Model R35-325, SN AC438251, wi Wire
Feed Lincoln N7 Model

E.I.M. Model 516-349 50 KVA
Projection Type Spot Welder,
SN RF082187, Throat Size 16"

WELDERS - PORTABLE

Lincoln Portable Welder, Model
SA200, SN A-771612, Gas Power, Trailer
Mounted

WELDERS - POWER UNITS

ESAB 452-CV Power Supplies, with Mig
35 Wire Feeder, Qty. 3, MI-1911227, MF-
1911229, MF 1911228

Lincoln Power Supply R3S 400 Amp,
with LN-7 Wire Feeder, Qty. 4, AC376504,
AC376385, AC285352, AC395106

Lincoln Power Supply DC 400, with LN-
7 Wire Feeder, Qty. 4, SN 620035, 627582,
AC621520, AC620036

ESAB 352-CV Power Supplies, With Mig
35 Wire Feeders, Qty. 3, SN 190911Q, ME-
1804016, MI1911269

R3S 400 Amp Power Supplies, with LN-
7 Wire Feeders, Qty. 12

WIRE FEEDER CONTROLS

Lincoln MIG 35, WS1908084

ESAB MIG 35, Qty. 4, WAAJ417009,
WAAJ417007, WS1816139, WS1906035

Lincoln LN-7, Qty. 3, V1990312603,
V1990312608, V1990214778, V1990100370,
V1991006636

Lincoln LN-7 Squirt, Qty. 3, 52125,
78501, 118861

**WE PAY CASH
FOR REFERRALS!**

MISCELLANEOUS

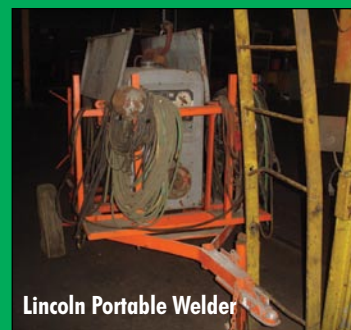
Rack Hardware, Nuts, Bolts,
Cabinets, Strippit and PierceAll
Punch Sets, Press Brake Dies,
Electric Hoist, Portable Carts,
Shelving, Steel Racks, Welding
Table, Welding Curtains, C-Clamps,
Bench Vises, Fire Extinguisher,
Press Brake Flanges, Ladders,
Torches, 4-Way Press Brake Die
12', Hand Tools, Acetylene Outfits,
10" H.D. Double End Bench
Grinder, Beaver Power Pipe
Threader, 6" Belt Sander, Whitney
Hydraulic Angle Shear, 82" x 44"
Diameter Barrel Tumbler

OFFICE EQUIPMENT

Executive Office
Conference Table



Lincoln Wire Feeder Control



Lincoln Portable Welder

PROXY BIDS AVAILABLE!
Call 419-536-4445 for details.

REAL ESTATE — 1791 Dowling Dr., Owosso, MI

- 57,000 Square Feet, 6.83 Acres, Two Indoor Rail Spurs, One Rail Goes Straight Through
- 45,000 Feet in Main Building w/ Office Space and Locker Room, 24 Foot Ceiling Height, Solid Concrete Floors
- 12,000 Square Feet in Newly Constructed Adjacent Building, 16 Foot Overhead Doors, Free Span
- Terms \$10,000 deposit down day of auction in the form of certified check made payable to LeValley Real Estate
- Closing within 30 days of auction
- Title—a guaranteed certificate of title will be provided at seller's expense
- Buyers Premium—a 10% Buyers Premium will be added to last bid to establish final price. **Real Estate will not be sold absolute.**
- Disclaimer—all terms and conditions announced the day of the sale will take precedence over printed material
- Contact—Randy Woodworth, LeValley Real Estate, 989-277-2815



PUBLIC MACHINERY AUCTION

TUESDAY, JUNE 13th

10:30 A.M. • DOORS OPEN AT 8:00 A.M.

MOORE IRONWORKS, INC.

1791 DOWLING DRIVE
OWASSO, MI 48867

Sale conducted by:



G-2000 Inc.

Machinery Auctioneers
Over 25 Years of Experience

1050 N. Westwood Ave.
Toledo, OH 43607



PRESORTED
FIRST CLASS MAIL
U.S. POSTAGE PAID
TOLEDO, OH
PERMIT NO 727

PUBLIC MACHINERY AUCTION

MOORE IRONWORKS, INC.
11791 DOWLING DRIVE
OWASSO, MI 48867

Directions to Auction Site:

From I-75 exit onto I-69W. Take the M-71 exit 188 toward Corunna/Durand. Turn right onto E M-71 for 3.3 miles. Turn slight left onto Hibbard Rd. for 7.5 miles. Turn right onto S. Delaney Rd. for 2.7 miles. Turn right onto Dowling Dr. for .1 mile.

From the South, take US-23 toward Ann Arbor. Merge onto I-96W via exit 60B toward Brighton/Lansing. Take the M-52 exit 122 toward M-43, turn right on MI-52 for 1.7 miles. Turn right to stay on MI-52 for 19.9 miles. Turn slight left onto S. Delaney Rd. for 2.3 miles. Turn right onto Dowling Dr.

Hotel Accommodations:

Comstock Inn (on MI 21)
300 E. Main St., Owosso, MI 48867
989-725-0999



TERMS OF SALE

G-2000 INC. TERMS AND CONDITION OF THE SALE: These terms are subject to amendments and modifications announced by the Auctioneer at the time of the auction. Any person participating in the auction shall be bound by the following terms and conditions. The Auctioneer does not warrant the accuracy, genuineness, authenticity, description, weight, count or measure of any listings specified herein.

All bidders must register immediately upon entering the site. Everything will be sold to the highest bidder or bidders for cash in accordance with the Auctioneer's Terms and Conditions. **Payment in full is required by June 14th, 2006 at 3:00 P.M.** All purchases require a deposit on the day of sale of not less than 25%. All payments must be made by cash, certified check, major credit card or company check with a bank letter of authorization guaranteeing irrevocable payment to G-2000 Inc.

A 10% Buyer's Premium will apply for on site sales. All sales are final, on an "As is", "Where is", "In Place", "With all faults" basis with no conditions or warranties, whether expressed, implied, statutory or otherwise, including without limitation, warranties or conditions as to title, description, fitness for purpose, quantity, merchantability, state conditions, location or otherwise. By submitting a bid, the buyer/bidder affirms he has inspected all items before bidding. Purchasers shall be deemed to have relied entirely upon their own inspection and investigations.

Each buyer will be subject to any sales tax chargeable by city and/or the state in addition to the bid price for any asset as purchased, unless proper and acceptable evidence of a certificate of exemption is presented to G-2000 Inc. at the time of payment.

Rigging and removal of sold equipment is the sole responsibility of the buyer and must be completed by the posted date. Rigging and removal may not begin until payment has been made in full and the auction sale is complete. All heavy rigging requiring the use of forklifts, cranes, etc., whether performed by the customer or a rigging company, must present a certificate of insurance for \$1,000,000.00 naming G-2000 Inc. as the insured.

Removal of paid equipment must be complete by 4:00 pm on June 21st, 2006.