

SALE DATE: Tuesday, October 23rd, 10:00 A.M. Doors Open @ 8:00 A.M.

PUBLIC MACHINERY AUCTION

Plummer Spray Equipment

**INSPECTION: Monday, October 22nd 8:00 A.M. - 5:00 P.M.
& Morning of Sale**

**YOU'RE NOT JUST A BIDDER,
YOU'RE OUR CUSTOMER!**

**G2000 - THE AUCTION COMPANY
THAT DOES IT ALL!**

THESE ITEMS AND MORE • DON'T MISS THIS SALE

PLUMMER SPRAY EQUIPMENT

**700 Fillmore St.
Napoleon, OH 43545
Owner Retiring**

Sale conducted by:



G-2000 Inc.
Machinery Auctioneers

Scott Yoder, Auctioneer

1050 N. Westwood
Toledo, Ohio 43607

Website: www.g2000inc.com

E-Mail: auctions@g2000inc.com

419-536-4445

Fax 419-536-4846

**Can't attend this auction?
Now you can**

bid from ANYWHERE!

**Visit www.bidspotter.com for
information or call our office
to pre-register.**



8' x 3/16" Capacity Dreis & Krump Chicago Power Bending Brake

BENDING BRAKE

Dreis & Krump Chicago Power Bending Brake, Model/Size 185, S/N: 94725, 8' Long, Approximately 5-HP Motor

SHEAR

Niagara 10' Shear, Model 610, S/N: 45445, Manual Back Gage, 10 Gage Mild Steel Capacity, (2) Sheet Metal Holders, 41" Long, Hydraulic Hold Downs, 5-HP Motor



10' x 10 ga. Niagara Shear

LATHE

South Bend 17" Engine Lathe, Model Turn-Nado, S/N: 67GJ1417, 17" Swing, 60" Center Distance, 3-Jaw Chuck, Threading, Chasing Dial, Taper Attachment, Aloris Quick Change Tool Post, Model CA, 30-1580 RPM Spindle Speeds, Tray Top, Chuck Guard, 8' Bed Length, Manual Stop, Light, Catalogue # CL170-E



17" x 60" South Bend Engine Lathe, Model Turn-Nado



15" Boice Crane Drill Press



Precision Drill Press



5 Spindle Allen Gang Drill Press



Johansson Radial Arm Drill Press



10 5/8" Burgmaster 6-Spindle Turret Drill Press



1/2HP Rush Machinery Drill Pointer



New Camco-Ferguson Intermittor Roller Dial Index Drive

DON'T MISS THIS SALE!



10" x 36" South Bend Engine Lathe



17" x 60" South Bend Engine Lathe



1 1/2 HP Bridgeport Vertical Milling Machine



2 HP Index Vertical/Horizontal Milling Machine

BENDING BRAKE

8' x 3/16" Capacity Dreis & Krump Chicago Power Bending Brake, Model/Size 185, S/N: 94725, 8' Long, Approximately 5-HP Motor

DRILL PRESSES

Adolph Tool Dies & Special Machinery Bench Drill Press, 6.5" Diameter Capacity, 1/4-HP Motor

Allen Gang Drill Press, 4-Spindle, 14" Diameter Capacity, 1/2-HP Motor, 1200 RPM's, 46-1/2" x 12" Table Size, Sliding Head Type, Spindle S/N: 11323 & 11337 & (2)-N/A, Jarvis Tapper Model 47500, Jarvis Tool Matic Tapper, Model 202-CAP No. 102516, S/N: 8036

Allen Gang Drill Press, 5-Spindle, 14" Diameter Capacity, 1/2-HP Motor, 1200 RPM's, 65-3/4" x 14" Table Size, (2) Power Feed Spindles, Spindle Head S/N: WPF18065 & WB18063C & 5102 & 4743, EITCO Tool Tapper, Model No. 3B, S/N: C3486

Baker Brothers High Speed Floor Type Drill Press, 24" Diameter Capacity, 23" x 16" Adjustable Table

Bench Drill Press, 6" Diameter Capacity

Boice Crane Drill Press, 15" Diameter Capacity, Bench Type, Metal Stand

Boice Crane Drill Press, 15" Diameter Capacity, Bench Type, Metal Stand, Metal Splash Pans, Drilling Fixture

Burgmaster 6-Spindle Turret Drill Press, Model 2-A, S/N: 2179, 33" x 17" Adjustable Table, Tap Matic Model 70X Reversible Tapping Unit, 10-5/8" Capacity

Champion Floor Type Drill Press, 20" Diameter Capacity, S/N: 7139, 16" Diameter Table, Manual Adjustment

Johansson Radial Arm Drill Press, S/N: 52582, Floor Type, 2-Speed Single Winding Constant Variable Motor, 35-3/4" x 22-3/4" Table Size, 5-2.5-HP Motor, 43-1060 RPM Spindle Speeds, 17" Throat, 28" Sliding Head Capacity

Lancelier Benchtop Drill Press, Model No. 41, 7" Diameter Capacity

Powermatic Drill Press, Model 1200, S/N: 220V297, 20" Diameter Capacity, 18" x 15-1/2" Table, 1.5/75-HP Motor, Power Feed, Variable Speed, 250-4600 RPM Spindle Speeds

Precision Drill Press, Model Vari-Matic, S/N: 24743V, Master Craft Tool Model 700 Cross Slide Table, 10-1/2" Long x 5" Wide, Drilling Fixture Mounted, Bench Type, 10" Diameter Capacity, .33-HP Motor

Precision Drill Press, Model Vari-Matic, S/N: 24978V, Master Craft Tool Model 700 Cross Slide Table, 10-1/2" Long x 5" Wide, Drilling Fixture Mounted, Bench Type, 10" Diameter Capacity, .33-HP Motor

GRINDERS

Cincinnati Double End Grinder, Model 110, S/N: 205265, FTA Type, 2-HP Motor, 12" Wheel x 2"

Haskins Portable Flex Grinder, S/N: 026797, 1/2-HP Motor

K. O. Lee Tool Grinder, Model 3600, SN: 704, 2-7/8" Wide x 22-3/4" Long Table

Lawnmower Blade Sharpener, Bench Type

Rush Machinery Drill Pointer, Model 132, S/N: 1903, 1/2-HP Motor, (1994)

Sterling Drill Pointer, Model V206A, S/N: DG5422

INDEXER

New Camco-Ferguson Intermittor Roller Dial Index Drive, Model 424, 24" Dial Plate, R400 Reducer, RH Cam, Stationary Center Post, 3-Stop, Indexes 120 °, 2" Cam Follower, 300° Index Period, Code: 3-F200-300, Brand New In Crate

LATHES

Custom Designed & Fabricated Engine Lathe, 28" Swing, 140" Bed Size, 24" 4-Jaw Chuck, 54" Center Distance Capacity W/ Hydraulic Cylinder Mounted On Bed Way

South Bend Engine Lathe, Model 17" Turn-Nado, S/N: 68GJ1645, 17" Swing, 60" Center Distance, Aloris Quick Change Tool Post, Model CA, 3-Jaw Chuck, Taper Attachments, Threading, Chasing Dial, 30-1580 RPM Spindle Speeds, Tray Top, Chuck Guard, 8' Bed Length, Manual Stop, Light, Catalogue # CL170-E

South Bend Engine Lathe, Model CL187RB, S/N: 23168R, 10" Swing, 36" Center Distance, 4'-1/2" Bed Length, 3-Jaw Chuck, Threading, Chasing Dial, Taper Attachment, Aloris Quick Change Tool Post, Model AXA, 55-1400 RPM Spindle Speeds, Sony Model LH52 2-Axis Digital Readout

South Bend 17" Engine Lathe, Engine Lathe, Model Turn-Nado, S/N: 67GJ1417, 17" Swing, 60" Center Distance, 3-Jaw Chuck, Threading, Chasing Dial, Taper Attachment, Aloris Quick Change Tool Post, Model CA, 30-1580 RPM Spindle Speeds, Tray Top, Chuck Guard, 8' Bed Length, Manual Stop, Light, Catalogue # CL170-E

South Bend Precision Lathe, Model A, S/N: 153714, 9" Swing, 36" Center Distance, 3-Jaw Chuck, Taper Attachment, Threading, Chasing Dial, 4-1/2" Bed Length, Cone Head Type (Belt Driven), Bench Type, Metal Table Mounted, Catalogue # 644R

MILLING MACHINES

Bridgeport Vertical Milling Machine, S/N: 12/BR-126232, 1-1/2-HP Motor, 9" x 42" Power Feed Table, Mitutoyo 2-Axis Digital Readout, Mitutoyo Vertical Digital Readout, Work Light

Index Vertical/Horizontal Milling Machine, Model 860, S/N: 16064, 2-HP Motor, 9" x 46" Overall Table Size, 6-3/4" x 38-1/4" Inside Table Size, 42-4200 RPM Vertical Milling Head Capacity, 65-4200 Spindle RPM Horizontal Milling Head Capacity, Mitutoyo 2-Axis Digital Readout, Mitutoyo Vertical Height Gage

United States Tool Company Horizontal Mill, Model 1, S/N: 10697R, 22-1/2" x 4" Table Size

PLATE BENDING ROLLS

Bertsch Power Plate Bending Roll, 10' Rolls, Offset Pyramid Style, Motor W/ Heat Exchanger

Pexto Manual Sheet Metal Roll, Model 416E, S/N: 43, 14-16 Gage, 36" Rolls, Manual Type

SAWS

Kalamazoo Horizontal Band Saw, Model 8CD, S/N: 1081523, 9" x 15" Capacity, Manual Clamping, Roller Conveyor Feed

Powermatic Vertical Band Saw, Model 140, S/N: 9-1847, 14" Capacity, 16" x 16" Tilting Table

Wells Metal Cutting Horizontal Band Saw, Model 600, S/N: 10024, 6-1/2" x 14" Capacity, Manual Clamping

view catalog online @ g2000inc.com or bidspotter.com

SHEAR

Niagara 10' Shear, Model 610, S/N: 45445, Manual Back Gage, 10 Gage Mild Steel Capacity, (2) Sheet Metal Holders, 41" Long, Hydraulic Hold Downs, 5-HP Motor

TURRET LATHES

Pierce Turret Lathe, S/N: 172 Lot # 14, Cone Head Type, Bar Feed, 6-Way Turret
Warner & Swasey Turret Lathe, Model No. 1 "1270-10," S/N: 429156, 6-Way Turret, Belt Driven

Warner & Swasey Turret Lathe, Model No. 1, 6-Way Turret, Belt Driven

Warner & Swasey Turret Lathe, Model No. 1A "4709", S/N: 252981, 5-Way Turret

Warner & Swasey Turret Lathe, Model No. 2 "M-1330," S/N: 506282 Lot # 52, 6-Way Turret

Warner & Swasey Turret Lathe, Model No. 2 "M-1330," S/N: 841115/2477008 Lot # 124, 6-Way Turret

Warner & Swasey Turret Lathe, Model No. 3 "M-1200," S/N: 1505820, Lot # 423, 6-Way Turret, Bar Feed

Warner & Swasey Turret Lathe, Model No. 3 "M-1200," S/N: 621107W Lot # 227, 6-Way Turret

Warner & Swasey Turret Lathe, Model No. 3 "M-1200," S/N: 669822 Lot # 261, 6-Way Turret

Warner & Swasey Turret Lathe, Model No. 4 "M-1420," S/N: 695584 Lot # 91, 6-Way Turret

WELDERS

Lincoln Arc Welder, Model IDEALARC 250, S/N: AC181717

Lincoln Arc Welder, Model IDEALARC 250-250, S/N: AC248605, Electrode Gun, Leads, Cart

Lincoln Arc Welder, Model PRO-CUT 60, S/N: U1950417739 (1995), Mig Gun, Leads, Cart

Lincoln Mig Welder, Model Power Mig 255C, S/N: U1060611548 (2006), Built In Wire Feed, Mig Gun, Leads, Cart

Lincoln Wire Welder, Model IDEALARC SP 250, S/N: AC811687 (1992), Built In Wire Feed, Mig Gun, Leads, Cart

MISCELLANEOUS SUPPORT EQUIPMENT

1" Bench Top Belt Sander, Table Mounted
Clarage Fan Company Steam Engine, Size 4 x 4, S/N: 1474

Complete Oxygen/Acetylene Torch Set W/ Cart, Regulator Gauges, Cutting Torch, Hose
Custom Designed & Fabricated Hydraulic Shop Press, 29" x 13" Bed Capacity, Logan Hydraulic System

Hill-Curtis Double End Belt Sander, Model Victory, S/N: 540B, 1" x 26" Sanding Belt

Hisey-Wolf Double End Buffer

Hisey-Wolf Double End Wire Brush/Buffer

11" Horizontal Belt Sander, 11" x 30" Belt
Onan Table Saw, 10" Blade Capacity, (2) 47" x 15" Side Tables

Perkins Kick Press

Quincy Air Compressor, Single Stage, Approximately 10-HP Motor, W/ Vertical Air Receiver Tank

Toledo Pipe Threader, Model 999, Cart Mounted

MISCELLANEOUS THROUGHOUT SHOP

Arbor Press; Assorted Patterns; Bench Parts Washer; Boxes Of Parts & Equipment; Brass Fittings; Brass Nuts, Buffing Wheels; C-Clamps; (2) 1 Ton Chain Falls; Conveyor Rollers; Desk, Double End Grinders, Drum Dollies, Electric Tools, Global 5,500-lb Pallet Truck, Hand Tools, Hexagon, Channel, Round And Flat Steel Stock, Ladders, Lathe Accessories, Lathe Parts, Lumber Cart, Machine Vises, Manual Drum Pumps, Microwave, Motors, Nuts & Bolts, Ohio Machinery Tool Company Shaper, Model 18 (Not In Service), Overhead I-Beam Cranes, 2,000-lb Capacity, W/ Electric Chain Hoist, Paint Spray Guns, Paint Tanks, Brand New Pressure Paint Pots, Perishable Tooling (Drills, End Mills, Taps, Etc), Picnic Table, Pipe Fittings, Pipes, Portable Metal Work Bench, Portable Scales, Portable Tables, Portable Welding Table w/ Welding Clamps, Presto Electric Die Lift, Built In Battery Charger, Refrigerator, Saw Horses, Shop Fans, Speed Lathe, Stamping Set, Steel Stock Racks, Stools, Super Spacers, Tables, Tank Fixtures, Tank Holders, Tool Carts w/ Tool Holders & Tooling (Reemers, Drill Bits, Drilling Chucks, Boring Bars, Etc), Tool Holders, V-Belts, Vises, Welded Part Bins, Welding Rod, Wire Wheels, Work Benches, Miscellaneous Office Furniture & Equipment, Blue Print File Cabinets, Computers, Desk & Assorted Office Furniture, Drafting Table w/ Drafting Machine, Encad Cad Jet 2 Printer, File Cabinets, Show Case W/ Assorted Spray Gun Equipment, Show Cases, Thompson Registry Books, Type Writer Desk, Xerox Blue Print Copier Model 2510



Kalamazoo Horizontal Band Saw



10' Bertsch Power Plate Bending Roll



Brand New Pressure Paint Pots



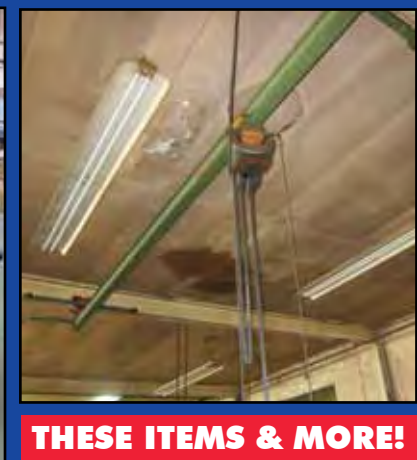
Custom Designed & Fabricated Hydraulic Shop Press



Warner & Swasey Turret Lathe



Warner & Swasey Turret Lathe



THESE ITEMS & MORE!

TERMS OF SALE

G-2000 INC. TERMS AND CONDITION OF THE SALE: These terms are subject to amendments and modifications announced by the Auctioneer at the time of the auction. Any person participating in the auction shall be bound by the following terms and conditions. The Auctioneer does not warrant the accuracy, genuineness, authenticity, description, weight, count or measure of any listings specified herein.

All bidders must register immediately upon entering the site. Everything will be sold to the highest bidder or bidders for cash in accordance with the Auctioneer's Terms and Conditions. **Payment in full is required by October 24, 2012 at 3:00 P.M.** All purchases require a deposit on the day of sale of not less than 25%. All payments must be made by cash, certified check, company check with a bank letter of authorization guaranteeing irrevocable payment to G-2000 Inc, or major credit card.

Buyer's Premium: 13% On-Site, 16% On-Line + 3% for credit cards or Paypal. All sales are final, on an "As is", "Where is", "In Place", "With all faults" basis with no conditions or warranties, whether expressed, implied, statutory or otherwise, including without limitation, warranties or conditions as to title, description, fitness for purpose, quantity, merchantability, state conditions, location or otherwise. By submitting a bid, the buyer/bidder affirms he has inspected all items before bidding. Purchasers shall be deemed to have relied entirely upon their own inspection and investigations.

Each buyer will be subject to any sales tax chargeable by city and/or the state in addition to the bid price for any asset as purchased, unless proper and acceptable evidence of a certificate of exemption is presented to G-2000 Inc. at the time of payment.

Rigging and removal of sold equipment is the sole responsibility of the buyer and must be completed by the posted date. Rigging and removal may not begin until payment has been made in full and the auction sale is complete. All heavy rigging requiring the use of forklifts, cranes, etc., whether performed by the customer or a rigging company, must present a certificate of insurance for \$1,000,000.00 naming G-2000 Inc. as the insured.

Removal of all items must be complete by October 31, 2012.



PUBLIC MACHINERY AUCTION

10:00 A.M. • TUESDAY OCTOBER 23RD

Doors Open at 8:00 A.M.

Inspection Monday, October 22nd, 8:00 A.M. - 5:00 P.M. & Morning of Sale

PLUMMER SPRAY EQUIPMENT

700 Fillmore St. • Napoleon, OH 43545

Sale conducted by:



Scott Yoder,
Auctioneer

G-2000 Inc.

419-536-4445

Fax 419-536-4846

1050 N. Westwood Ave.
Toledo, OH 43607



PRESORTED
FIRST CLASS MAIL
U.S. POSTAGE PAID
TOLEDO, OH
PERMIT NO 811

Website: www.g2000inc.com • E-Mail: auctions@g2000inc.com

PUBLIC INVITED! MACHINERY AUCTION

10:00 A.M. • Tuesday, October 23RD

700 Fillmore St. • Napoleon, OH 43545

2 PRODUCT LINES AVAILABLE

Plummer Spray Equipment & Plummer Tire Molding Equipment

Product lines & customer list will
be offered on the day of sale.

Call for details.

REAL ESTATE AUCTION

Tuesday, October 23 at 12pm (Noon)



Machinery Auction will be stopped at Noon for 30 minutes for the Real Estate Auction, which will be conducted by Jack Amlin, CAI, AARE, Auctioneer for The Danberry Co., 419-867-7653.



ABSOLUTE AUCTION!

Tuesday, October 23 at 12pm (Noon)

700 Fillmore, Napoleon OH 43545

Directions: Rt 6 W to S 108 (Scott St) to E on Shelby, N on Maple, E on Fillmore.

Open for Preview/ Registration at 10AM

Great Commercial Building on HUGE lot! 1.7 ACRES ±

The main building offers 5,600 SQ. FT. at 50 x 112!

There is plenty of room in the office at 49 x 50.

This building also offers two shops- 22 x 50 & 50 x 62.5!!

Complete with storage (11 x 11) this building is a MUST SEE!

Imagine the Possibilities! Previously used to Manufacture custom sprayers!

NO MINIMUM OR RESERVE!